

420x260mm/

PROBLEM & SOLUTION

Problem	Solution
I experience pain when I use the breast pump.	Stop using the breast pump and consult your breastfeeding advisor. If the pump body does not come away easily from the breast, it may be necessary to break the vacuum by placing a finger between the breast and the massage cushion.
I do not feel any suction.	Check if you have assembled the breast pump correctly by following the steps in chapter "OKIZZ Little Owl Double Breast Pump". Make sure the silicone tube is firmly attached to the motor unit and to the cap and diaphragm.
I need to replace the silicone tube, but do not know how to remove it.	To remove the tube, grab it close to the motor unit and pull while twisting it. To reconnect the tube, ease the tube back onto the connector on the motor unit with a slight twisting motion. Make sure it is securely attached.

WHEN TO EXPRESS BREAST MILK

If breastfeeding goes well for you, it is advisable (unless advised otherwise by your healthcare professional/breastfeeding advisor) to wait until your milk supply and breastfeeding schedule are established (normally at least 2 to 4 weeks after giving birth).

Exceptions:

1. If breastfeeding does not immediately work for you, expressing regularly can help to establish and maintain your milk supply.
2. If you are expressing milk for your baby to be given in hospital.
3. If your breasts are engorged (painful or swollen): you can express a small amount of milk before or between feeds to ease the pain and to help your baby latch on more easily.
4. If you have sore or cracked nipples, you may wish to express your milk until they are healed.
5. If you are separated from your baby and wish to continue to breastfeed when you are reunited, you should express your milk regularly to stimulate your milk supply.

You need to find the optimum times of the day to express your milk, for example just before or after your baby's first feed in the morning when your breasts are full, or after a feed if your baby has not emptied both breasts. If you have returned to work, you may need to express during a break.

Using a breast pump requires practice and it may take several attempts before you succeed. Fortunately, the OKIZZ electric breast pump is easy to assemble and use so you will soon get used to expressing with it.

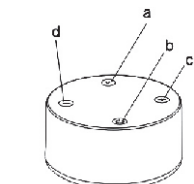
INTRODUCTION

Thank you for purchasing the Single Breast Pump. Your new Breast Pump is compact and discrete to use, you can take it with you anywhere, allowing you to express milk at your own convenience and maintain your milk supply. This manual contains various precautions and basic procedures for using this double electric breast pump. Read this manual carefully before using and keep in a handy place for future reference.

Breast Pump is provided with unique design, enabling you to keep more comfortable expressing posture. A soft massage protection pad design provides soft and warm feeling and may stimulate baby sucking action, enabling the milk to outflow silently, comfortably, tenderly and rapidly. The breast pump is compact and exquisite, easy to assemble. Each part may be easy to wash in dish-washing machine and free from BPA.

A breast pump may assist you to extend the period of breast feeding. You may express and store the milk. Even though you are not able to breastfeed baby by yourself, they may share your milk through the pump. On account of small and exquisite structure of breast pump, it is very secluded for expressing. Therefore, you may carry it with you and express in your own good time, providing milk for baby.

EQUIPMENT SCHEMATIC DIAGRAM



- a. Mode Key
- b. On Off Key
- c. Increase Vacuum
- d. Decrease Vacuum

PRODUCT DESCRIPTION

- | | |
|-----------------------|---------------------|
| 10. Pump Body | 6. Natural Bottle |
| 2. Silicone Diaphragm | 7. Teat & Cap |
| 3. Cap | 1. Motor Pump |
| 4. Silicone tube | 8. USB Cable |
| 5. Valve | 10. Massage Cushion |
| | 9. Adapter |

PUMPING OPERATION

Press the Key On/Off - Massaging mode automatic start.
Press the switching mode key (You may convert red-light for massage / blue light for expressing mode)

Press \odot or \ominus key, LCD screen will show the level at present.

The default pumping time of is 30 minutes, it will automatic power off after pumping time. It will memory your pumping habit before powering off.

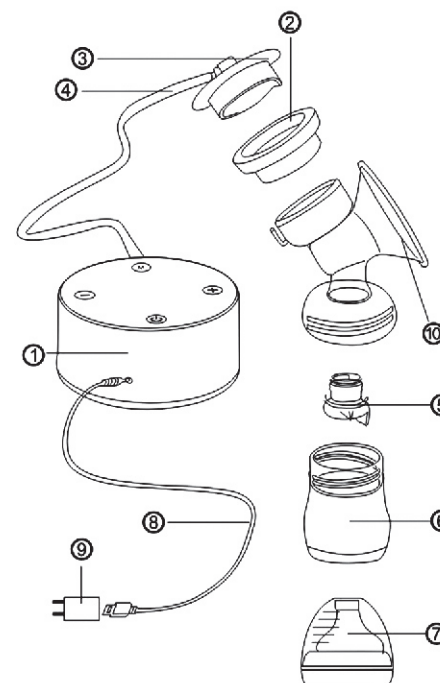
Red light Massage Mode (total 10 shifts)

After starting up, the pump shows red-light mode, use underdrive frequency to milk secretion stimulation reflection until milk starts flowing. Once the milk flows, press + button, or adjust to blue-light mode to increase suction.
Blue light Expressing Mode (total 10 shifts)

After switching on the breast pump, if you want to enter expressing mode, adjust the pump to expressing blue-light mode, press key \odot \ominus to adjust the suction to the level depending in your personal comfort.

OPERATING THE BREAST PUMP

1. Wash your hands thoroughly and make sure your breast are clean. Relax in a comfortable chair.
2. Press the pump body against your breast. Make sure that your nipple is centered so that massage cushion creates an airtight seal.
3. Press the On/ Off button, the breast pump automatically start up in massage mode, and you can change the level of the massage through the increase & reduce key.
4. When the breast milk flows, you can press the mode key from massage to bionics mode and choose the most comfortable level.
Attention: Do not always maximum level of expression, just choose the most comfortable level for pumping.
5. After finished your pumping, switch off the breast pump with On/Off key and remove the pump body from your breast.
6. Unscrew the bottle from the pump body and ready for feeding or storage. Clean used parts according to the instructions in chapter "Cleaning and Sterilizing".
7. Unplug the motor unit adapter.



CLEANING AND STERILISING

The motor unit, the silicone tube and cap and the adapter do not require cleaning and sterilising, as they do not come into contact with breast milk. Clean and sterilise all other parts of the breast pump before first use. Also clean these parts after each subsequent use and sterilise them before each subsequent use.

Danger: Never put the motor unit or the adapter in water or in a steriliser.

CLEANING AND STERILISING

The motor unit, the silicone tube and cap and the adapter do not require cleaning and sterilising, as they do not come into contact with breast milk. Clean and sterilise all other parts of the breast pump before first use. Also clean these parts after each subsequent use and sterilise them before each subsequent use.

Danger: Never put the motor unit or the adapter in water or in a steriliser.

1. Disassemble the breast pump completely. Also remove the valve. Be careful when you remove the valve and when you clean it. If it gets damaged, your breast pump does not function properly. To remove the valve, gently pull at the ribbed tab on the side of the valve.
2. Clean all parts, except the motor unit, the silicone tube and cap and the adapter, in the dishwasher (on the top rack only) or in hot water with some mild washing-up liquid and then rinse them thoroughly. To clean the valve, rub it gently between your fingers in warm water with some washing-up liquid. Do not insert objects into the valve, as this may cause damage.
3. Sterilise the cleaned parts of the breast pump in a steam steriliser or by boiling them for 5 minutes. Never put the motor unit or the adapter in water or a steriliser. If necessary, you can wipe the motor unit with a soft, damp cloth.

STORING BREAST MILK

Only store breast milk collected with a sterile pump.

Breast milk can be stored in the fridge (not in the door) for up to 48 hours. Expressed milk should be refrigerated immediately. If you store milk in the fridge to add to during the day, only add milk that has been expressed into a sterilised bottle or breast milk container. Breast milk can be stored in the freezer for up to three months as long as it is kept in either sterilised bottles fitted with a sterilised screw ring and sealing disc. Clearly label the bottle with the date and time of expression and use older breast milk first. If you intend to feed your baby with the expressed breast milk within 48 hours, you can store the breast milk in the fridge in an assembled bottle:

1. Unscrew the bottle and remove it from the pump body.
2. Assemble a sterilised teat and screw ring onto the bottle according to the separate instructions provided with the bottle. Seal the teat with the dome cap.
3. Alternatively, insert a sterilised sealing disc into a sterilised screw ring and screw this onto the bottle.

Do's

Always refrigerate or freeze expressed milk immediately.
Only store milk collected with a sterilised breast pump in sterilised bottles.

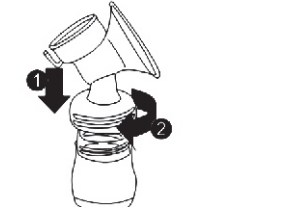
Don'ts

Never refreeze thawed breast milk.
Never add fresh breast milk to frozen breast milk.

1. Disassemble the breast pump completely. Also remove the valve. Be careful when you remove the valve and when you clean it. If it gets damaged, your breast pump does not function properly. To remove the valve, gently pull at the ribbed tab on the side of the valve.
2. Clean all parts, except the motor unit, the silicone tube and cap and the adapter, in the dishwasher (on the top rack only) or in hot water with some mild washing-up liquid and then rinse them thoroughly. To clean the valve, rub it gently between your fingers in warm water with some washing up liquid. Do not insert objects into the valve, as this may cause damage.
3. Sterilise the cleaned parts of the breast pump in a steam steriliser or by boiling them for 5 minutes. Never put the motor unit or the adapter in water or a steriliser. If necessary, you



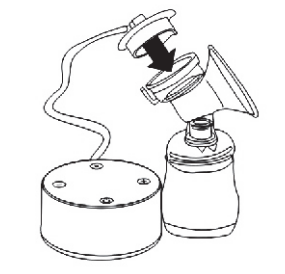
1 Insert the valve into the pump body from underneath. Push in the valve as far as possible.



2 Screw the pump body clockwise onto the bottle until it is securely fixed.



3 Place the silicone diaphragm into the pump body from above. Make sure it fits securely around the rim by pressing down with your fingers to ensure a perfect seal.



4 Attached Silicone tube and cap onto the diaphragm. Push down the cap until it is securely in place.



The escort for the mother's love

OD-302



USER'S GUIDE

Read this User's Guide before you start using your OD-302 Breast Pump. Keep this User's Guide in a handy place for future reference.

To Know More About Us

Scan QR Code



WARRANTY CARD

This appliance is warranted for a period of One Year from the date of purchase as shown by the dealer's stamp and signature and by the purchaser's receipt.

WARRANTY CARD	
Model No.	Lot No.
Invoice No.	Date of Purchase.
Purchased by :	Contact No. :
Address :	
Dealer Name :	
Dealer Sign & Stamp	

Imported & Marketed By:

Passim Medichem Agencies

#186, Ind. Area, Phase II, Chandigarh 160002

Corporate Office :

902, 9th Floor, WallFort House, S. V.

Road, Nr. Citi Mall, Goregaon (w),

Mumbai - 400 062. INDIA

+ 91-9359490504/9357504665

Website : www.drodin.in

Email ID : customercare@drodin.in