

145 mm

110 mm

Dr. Odin®

**Owner's Manual
Manual Breast Pump
Model : LD- 101**



Contents

- Product Description02
- Safety Notice03
- Unit Illustration05
- Installation Instructions06
- Product Assembly06
- Pumping10
- Size of Breastshield12
- Cleaning13
- Trouble Shooting14
- Waste Treatment & Maintenance15
- Specifications16
- Company Detail17

1 Product Description

Thank you for purchase and use LD-101 manual breast pump. The manual breast pump is used to express and collect breast milk from lactating mothers. Please read this manual carefully before using stimulation and expression mode. This is a single use product that should not be shared between moms.

Intended use :

- This breast pump is for household use only. As the pump is compact and discrete to use, you can take it with you anywhere, allowing you to express milk at your own convenience and maintain your milk supply.
- If your breasts are engorged (painful or swollen), you can express a small amount of milk before or between feeds to ease the pain and to help your baby latch on more easily.
- If you are separated from your baby and wish to continue to breastfeed when you are reunited, you should express your milk regularly to stimulate your milk supply.

3 Safety Notice

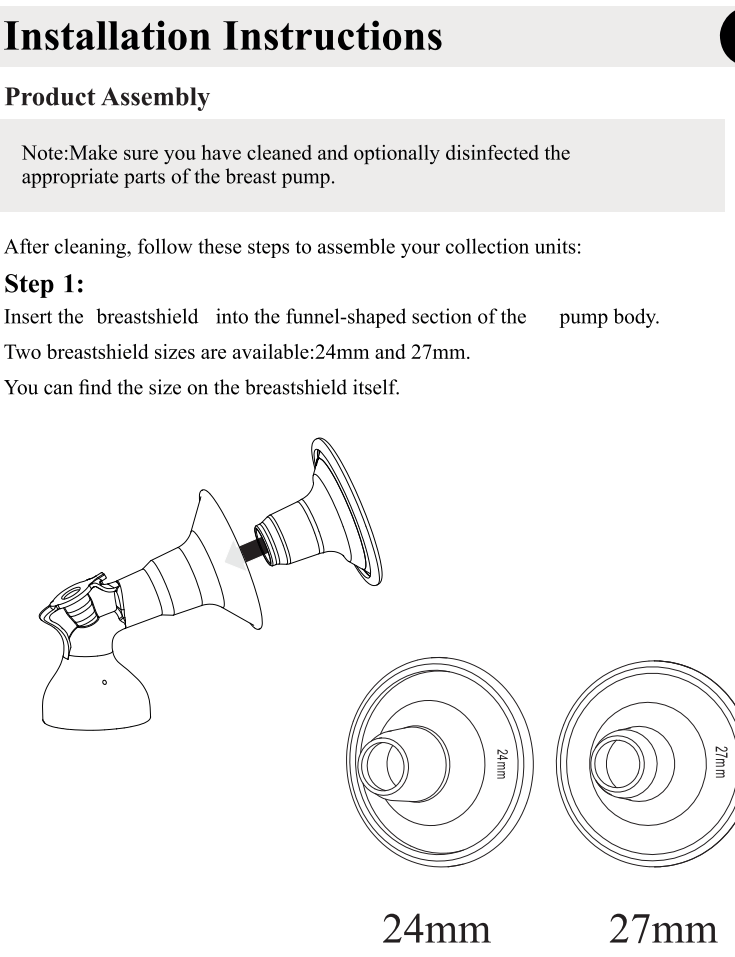
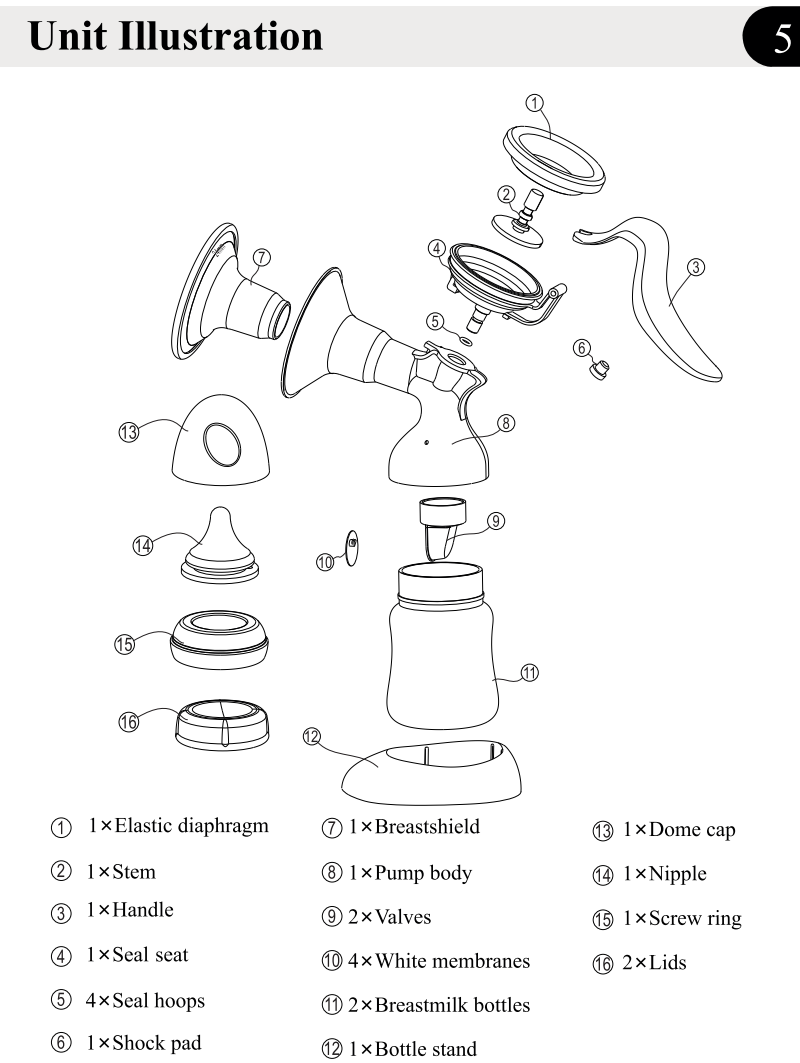
Explanation of symbols:

SYMBOL EXPLANATION	
	Caution
	Consult Accompanying Documents
	Keep Away From Sunlight
	Storage and Transportation Temperature Limit: -20°C-54°C(-4°F-131°F)
	Storage and Transportation Humidity Limit: 15-95%RH
	Serial Number
	European Authorized Representative Manufacturer

4 Safety Notice

Caution

- Use the product only for its intended use as described in this manual.
- Please check that all the parts of breast pump is complete before using.
- Do not use attached lines not recommended by the manufacturer.
- Never use the breast pump while you are pregnant, as pumping can induce labor.
- Inspect all appropriate pump components before each use.
- Clean and sanitize all parts that come in contact with your breast and breast milk prior to first use.
- Wash all parts that come in contact with your breast and breast milk after every use.
- For hygiene reasons, this product is intended for use by a single user.
- Do not allow children or pets to play with accessories.



7 Installation Instructions

Step 2: Please install the white membrane on valve smoothly. Make sure the white membrane won't curl up.

Step 3: Insert the valve into the pump body from underneath. Push the valve in as far as possible.

Step 4: Screw the pump body clockwise onto the bottle until it is securely fixed.

8 Installation Instructions

Step 5: Insert the stem into the hole of the elastic diaphragm. Push the stem in as far as possible. Place the diaphragm with stem into the seal seat, make sure the diaphragm edge and seal seat edge close fitting. If there's no "O" shaped sealing ring on the plug at the bottom of the sealing seat, please put in on.

Figure 5-1 Figure 5-2 Figure 5-3

9 Installation Instructions

Step 6: Attach the handle on diaphragm with stem by hooking the U-shape hole in the groove of the stem. Push down the handle onto the seal seat until its well placed. There's two grooves on the stem to help get two kind of suction. The lower one is suitable for stimulation and the higher one is suitable for expression. We recommend you to start in lower groove for stimulation. Once your milk starts flowing, please use the higher groove for expression.

Step 7: Insert the seal seat in the hole of the connector and screw the seal seal clockwise until it is securely fixed.

10 Pumping

Relax in a comfortable chair (you may wish to use cushions to support your back).

a. Press the assembled pump body against your breast. Make sure that your nipple is centered. Hold the breastshield onto your breast with your thumb and index finger. Support your breast with the palm of your hand.

b. Gently start to press down the handle until you feel the suction on your breast. Then allow the handle to return to its resting position. You can choose the expression suction and frequency of by adjusting the pressure and speed of handle. Note: You do not have to press down the handle fully, only as much as is comfortable. Your milk will soon start flowing, even though you are not using all the suction the pump can generate.

c. You can choose a lower suction to press down the handle quickly to start. Once your milk start flowing, please use the higher suction to press down the handle gently. It follows the rhythm of baby suction. If there's no milk flowing within 5 minutes, please stop pumping.

Note: Do not worry if your milk does not flow immediately. Relax and continue pumping. Repositioning the breast pump on your breasts from time to time can help stimulate milk flow. Try to express at another time during the day. If the process becomes very uncomfortable or painful, stop using the pump and consult your breastfeeding adviser.

11 Pumping

d. Close the bottle with a lid after pumping. Disassemble and clean the parts that contact breast and milk.

Do not continue pumping for more than 5 minutes at a time if you do not succeed in expressing any milk.
Use bottle holder to prevent the bottle from tipping over. Do not fill the bottle too full to prevent overflowing and spillage.

12 Size of Breastshield

Make sure that your nipple fits correctly in the breast shield. Not too tight, it is important that the nipple can move freely, while expressing breast milk. The breastshield should not be too large, because this can cause pain or less effective expression. Two breast shield sizes are available: 24mm and 27mm. There's one size breast shield come with the product.

If there is any pain or discomfort during pumping, please consider to choose a larger or smaller size.

13 Cleaning

Caution:

- Only use drinking-quality tap or bottled water for cleaning.
- Take apart and wash all parts that come in contact with the breast and breastmilk immediately before and after use to avoid dry up of milk residues and to prevent growth of bacteria.
- Please disassemble all parts which require clean to make sure cleaning thoroughly.
- Please place parts on a clean environment to avoid being polluted.

Cleaning before use:

- Take apart and wash all parts that come in contact with the breast and breastmilk.
- Put all separated parts into pot. Fill in the pot with enough drinking-quality tap or bottled water to cover all parts.
- Bring the water to boil. Place parts in boiling water for 5 minutes.
- Allow water to cool and gently remove the parts from the water. Be careful and don't scald your skin.
- Place the parts neatly on a clean paper towel or in a clean drying rack and allow them to air dry. Avoid using cloth towels to dry the parts because they can carry germs and bacteria that are harmful to your baby.

Cleaning after use:

- Take apart and wash all parts that come in contact with the breast and breastmilk.
- Rinse in cool water all separated parts that came in contact with breast and breastmilk in order to remove breastmilk residue.
- Place the parts neatly on a clean paper towel or in a clean drying rack and allow them to air dry.

14 Trouble Shooting

Abnormal phenomenon	Cause analysis	Solutions
Low or No Suction	Connection points is loose	Inspect all connection points to ensure attachment is secure.
	The valve is chipped or cracked or there's holes or tears on membrane is	Replace valve and/or membrane prior to pumping
	Breastshield size is not fit	Replace a appropriate size breastshield

15 Waste Treatment

When disposing this type of product, contact the retailer where product was purchased or contact your local government office for details regarding how this item can be disposed in an environmentally safe recycling center. Business users should contact their supplier and check the terms and conditions of the purchasing agreement. This product is free of hazardous materials.

Maintenance

- Avoid dropping, slamming, or throwing the unit.
- Avoid extreme temperatures. Do not expose unit directly under sunshine.
- Do not use the unit for other purpose.

16 Specifications

Product Description	Manual Breast Pump	
Model	LD-101	
Vacuum (approx.)	Approx. -250mmHg	
Breastshield size	24mm or 27mm	
Unit Weight	approx. 159g(5.6oz)	
Unit Dimensions	205 x 186 x 90mm (L x W x H)	
Operating Environment	Temperature	5°C - 40°C (41°F - 104°F)
	Humidity	15-95%RH
	Pressure	760Pa - 1060Pa
Storage Environment	Temperature	-20°C - 55°C (-4°F - 131°F)
	Humidity	≤95%RH
	Pressure	Atmospheric Pressure

Specifications are subject to change without notice.

17 To Know More About Us

Scan QR Code

Imported & Marketed By:
Pasin Medichem Agencies
186, Ind. Area Phase II,
Chandigarh 160 002
Corporate Office:
902, 9th Floor, WallFort House,
S.V. Road, Near Citi Mall,
Goregaon (W), Mumbai-400 062
For Any Complaint/ Suggestion
Please Contact : 1800 309 3009
Email ID: customercare@drodin.in
Website: www.drodin.in