


Ejectable/Painless Lancing Device



Instruction

Important:

1. The lancing device is for single patient use. Do not share it with anyone including other family members! Do not use on multiple patients!
2. Prior to testing, Use warm water to increase blood flow if necessary. Then dry your hands and the test site thoroughly.
3. Wipe the test site with an alcohol swab or soapy water, and gently massage the test site before capillary collection.
4. Make sure the lancing device is kept clean from cream, lotion, or dust.
5.  Do not reuse lancet, always use a new, sterile lancet for testing.

CARE OF THE LANCING DEVICE:

1. Clean the lancing device using a soft cloth with mild soap and warm water as required. Carefully dry the lancing device. Do not immerse the lancing device in liquid.
2. To disinfect the lancing device cover, use 10 : 1 (water : disinfectant) dilution and immerse the cap (30 minutes maximum), then wash with water and wait until it is dry.

- 1 Wash your hands with soap and warm water and dry them thoroughly. Remove the cap of the lancing device



- 2 Insert a **new** lancet into the lancet carrier. Push down firmly until it is fully secured.



- 3 Remove the protective cap from the lancet and save it for later use. Replace the cap of the lancing device by pushing it back in.



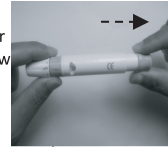
- 4 Choose the desired depth of penetration to get a good blood sample with the least amount of discomfort.

Adjustments:

- 0-1 soft or dedicated skin
- 2-3 normal skin
- 4-5 thick or callused skin



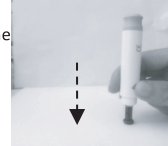
- 5 Pull the lancing device until it clicks. The lancing device is now prepared and ready for use. The indicator on lancing device will show if the lancing device is properly launched.



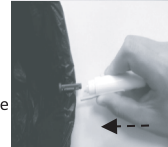
- 6 Hold the lancing device firmly against the site of your finger. Press the trigger to puncture the skin.
The first drop of blood usually contains tissue fluid and serum, which may affect test results and should be discarded.



- 7 Remove the cap of lancing device when finished. Put the protective cap back onto the exposed needle of the lancet.



- 8 Direct the lancing device away from your person and slide the lancet ejector lever in a forward motion, disposing the lancet in an approved container. Return lancet ejector lever to its original position, then depress the trigger button. Pull back on the cap for next time using.



****Do not reuse lancets.***